

F

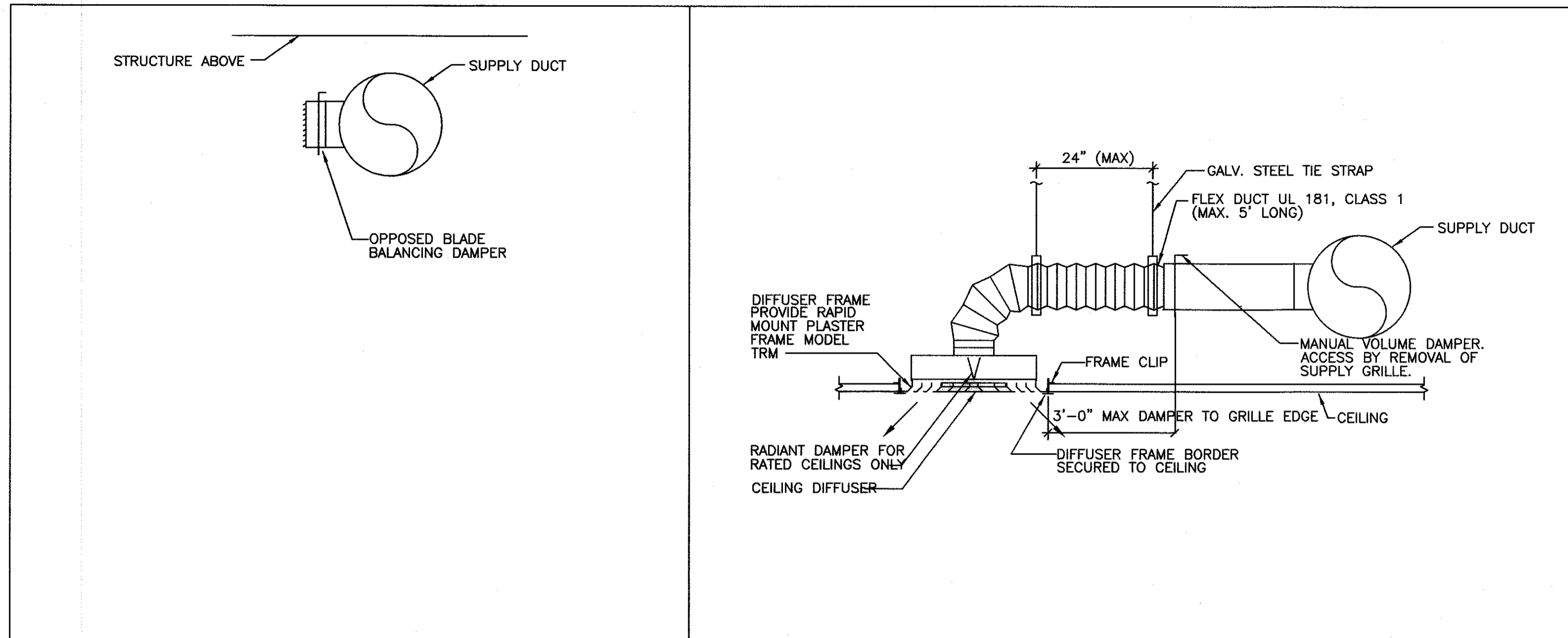
E

D

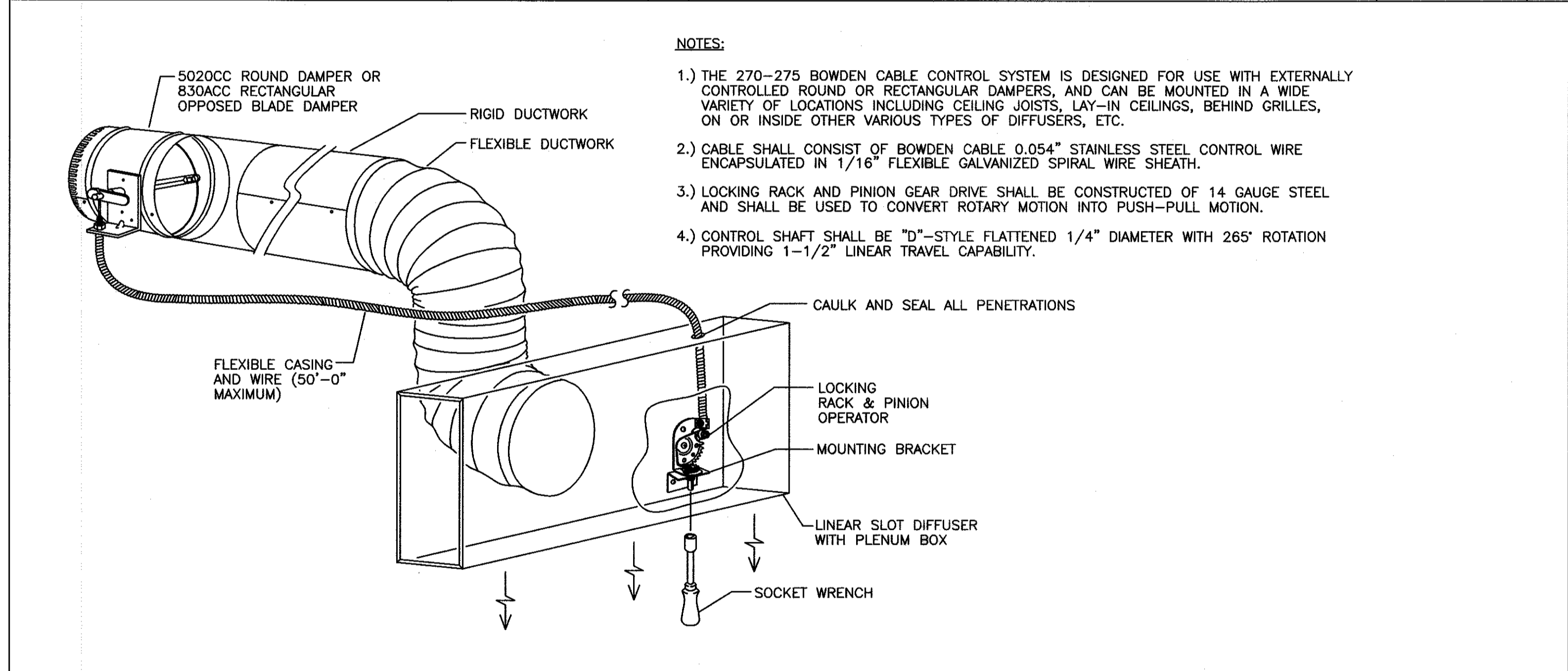
C

B

A



SIDE GRILLE INSTALLATION DETAIL	NOT TO SCALE 3	DIFFUSER CONNECTION DETAIL	NOT TO SCALE 2
---------------------------------	-------------------	----------------------------	-------------------



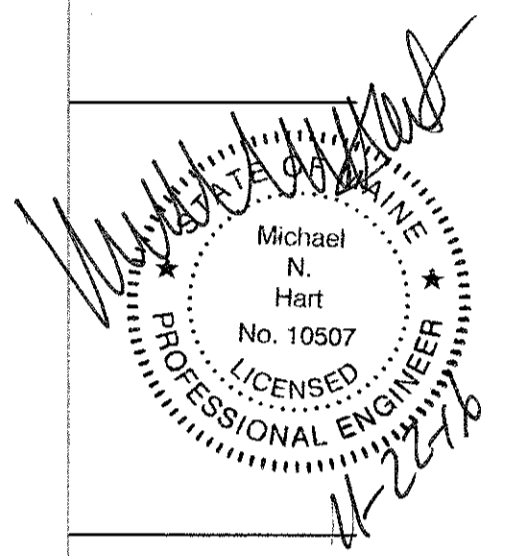
LINEAR SLOT DIFFUSER DETAIL	NOT TO SCALE 5
-----------------------------	-------------------

- NOTES:**
- 1.) THE 270-275 BOWDEN CABLE CONTROL SYSTEM IS DESIGNED FOR USE WITH EXTERNALLY CONTROLLED ROUND OR RECTANGULAR DAMPERS, AND CAN BE MOUNTED IN A WIDE VARIETY OF LOCATIONS INCLUDING CEILING JOISTS, LAY-IN CEILINGS, BEHIND GRILLES, ON OR INSIDE OTHER VARIOUS TYPES OF DIFFUSERS, ETC.
  - 2.) CABLE SHALL CONSIST OF BOWDEN CABLE 0.054" STAINLESS STEEL CONTROL WIRE ENCAPSULATED IN 1/16" FLEXIBLE GALVANIZED SPIRAL WIRE SHEATH.
  - 3.) LOCKING RACK AND PINION GEAR DRIVE SHALL BE CONSTRUCTED OF 14 GAUGE STEEL AND SHALL BE USED TO CONVERT ROTARY MOTION INTO PUSH-PULL MOTION.
  - 4.) CONTROL SHAFT SHALL BE "D"-STYLE FLATTENED 1/4" DIAMETER WITH 265° ROTATION PROVIDING 1-1/2" LINEAR TRAVEL CAPABILITY.

OWNER:  
**WILLIAMS-SONOMA, INC.**  
 3250 Van Ness Avenue  
 San Francisco, CA 94109  
 T 415 616 8602  
 F 415 439 8164  
 www.williams-sonoma.com

**EEA**  
 EEA Consulting Engineers  
 6615 Vaughn Ranch Road, Suite 200  
 Austin, Texas 78726-2314 USA  
 512.744.4400 main 512.744.4444 fax  
 www.eeac.com

State Registration MAINE  
 Firm Registration No. NYA  
 EEA Project No. 20166538  
 DRAWN BY: ARC  
 CHECKED BY: BKK



**west elm**  
 Downtown Portland  
 164 Middle Street  
 Portland, ME 04101  
 PROJECT #006-160335.00

ISSUED / REVISED	DATE
PRELIMINARY SET	09/08/16
LL COORDINATION SET	11/08/16
LL/PERMIT SET	11/21/16

MECHANICAL  
 DETAILS

**M-301**